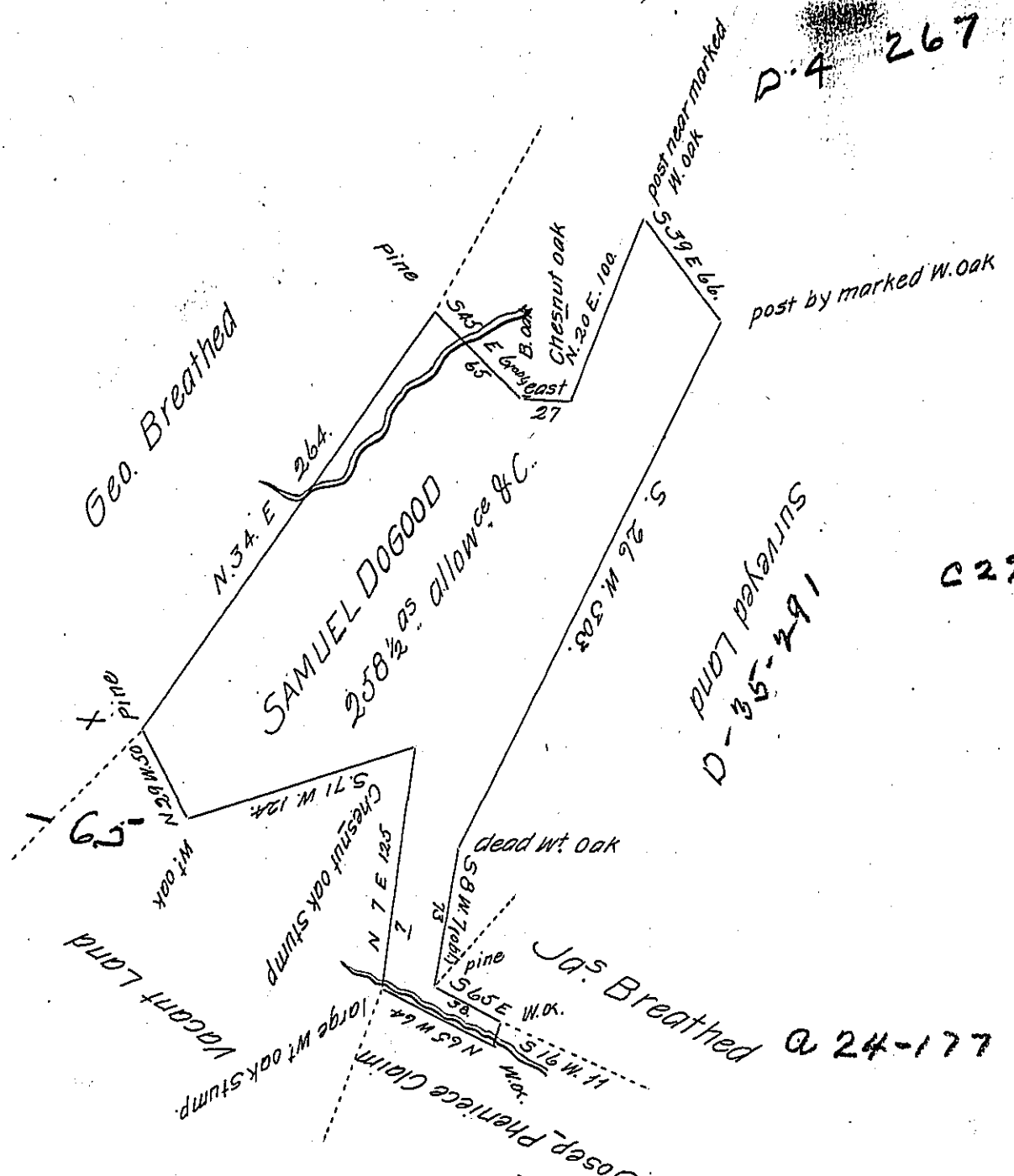


D-4 267

a-18



Situate on the Waters of Sonoloway Creek in Bethel Township in the County of Bedford containing two hundred and fitty eight acres and a half and allowance of six P^r Cent for roads & C. Surveyed for Samuel Dogood the 26th ^{Sept} 1809. in pursuance of a Warrant dated the 4th day of January 1786. also in pursuance of an Order dated the 21st day of September 1809. in Vol. N^o 7. Page 485.

William Piper Dep^y S^r

To Andrew Porter Esquire
Surveyor General

IN TESTIMONY that the above is a copy of the original remaining on file in the Department of Internal Affairs of Pennsylvania, made conformably to an Act of Assembly approved the 16th day of February, 1833, I have hereunto set my Hand and caused the Seal of said Department to be affixed at Harrisburg, this twentyfourth day of August 1904.

Joac B. Brown
Secretary of Internal Affairs.